



2018-2019

School	JK	K	1	2	3	4	5	6	7	8	9	10	11	12	Total
Mildred Hall	17	23	40	31	27	19	30	25	30	29					271
Ecole J.H. Sissons (French)	68	46	63	46	49	38	40								350
William McDonald (E)								30	20	28					78
William McDonald (FI)								38	27	36					101
William McDonald (IF)								19							19
William McDonald (PIF)									43	19					62
N.J. Macpherson	60	42	44	56	53	49	31								335
Range Lake North (E)	19	29	16	28	25	31	34	23	13	7					225
Range Lake North (IF)								19							19
Range Lake North (PIF)									14	16					30
Ecole Sir John Franklin (E)											81	105	144	178	508
Ecole Sir John Franklin (FI)											16	24	15	16	71
Ecole Sir John Franklin (PIF)											30	8	8	4	50
Totals	164	140	163	161	154	137	135	154	147	135	127	137	167	198	2119

2019-2020

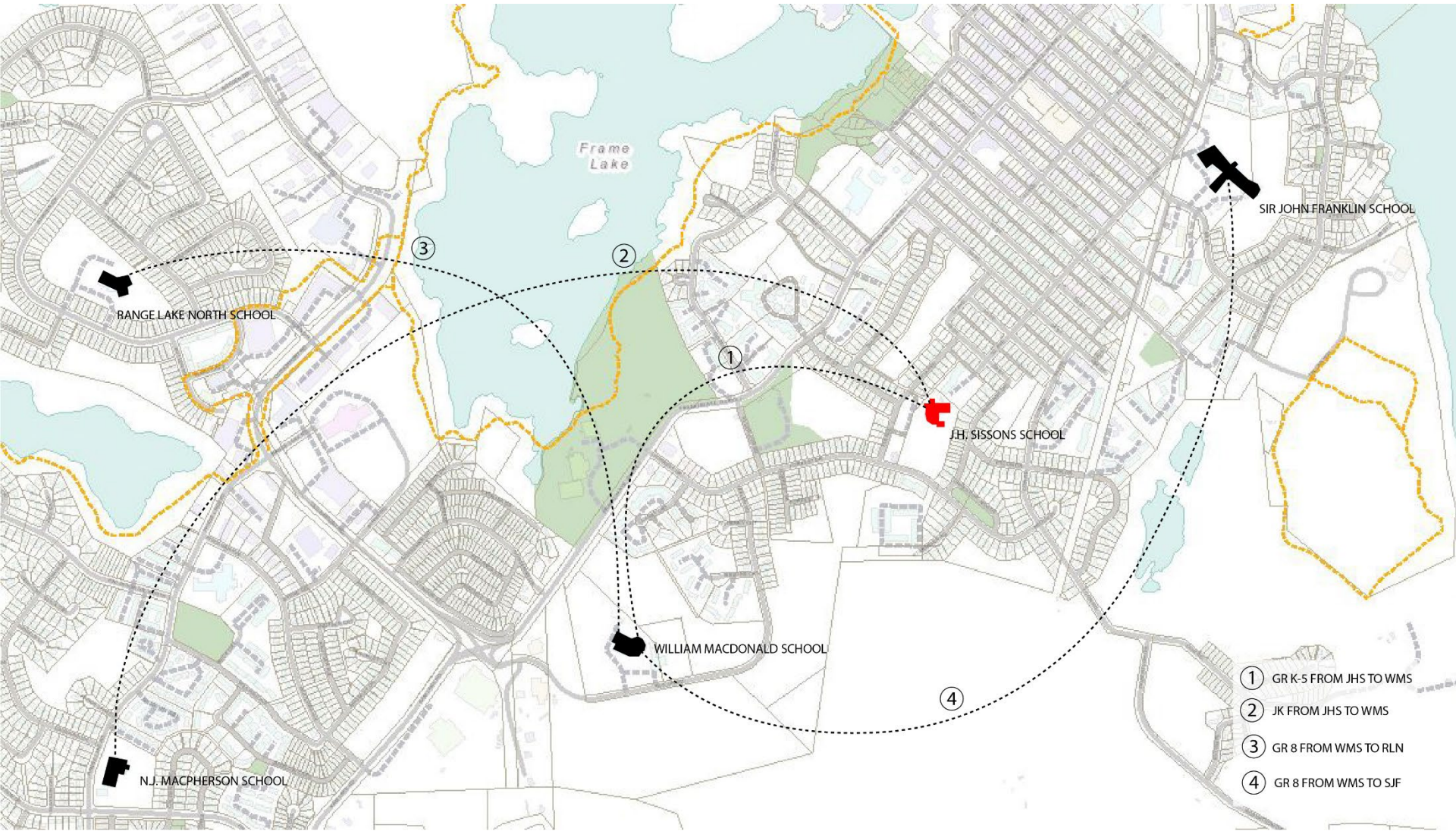
School	JK	K	1	2	3	4	5	6	7	8	9	10	11	12	Total
Mildred Hall	20	17	23	40	31	27	19	30	25	30					262
Ecole J.H. Sissons (French)	60	68	46	63	46	49	38								370
William McDonald (E)								15	30	20					65
William McDonald (FI)								40	38	27					105
William McDonald (IF)								16							16
William McDonald (PIF)									19	43					62
N.J. Macpherson	50	60	42	44	56	53	49								354
Range Lake North (E)	20	19	29	16	28	25	31	17	23	13					221
Range Lake North (IF)								17							17
Range Lake North (PIF)									19	14					33
Ecole Sir John Franklin (E)											64	81	105	144	394
Ecole Sir John Franklin (FI)											36	16	24	15	91
Ecole Sir John Franklin (PIF)											35	30	8	8	81
Totals	150	164	140	163	161	154	137	135	154	147	135	127	137	167	2071

2020-2021

School	JK	K	1	2	3	4	5	6	7	8	9	10	11	12	Total
Mildred Hall	20	20	17	23	40	31	27	19	30	25					252
Ecole J.H. Sissons (French)	60	60	68	46	63	46	49								392
William McDonald (E)								25	15	30					70
William McDonald (FI)								38	40	38					116
William McDonald (IF)								24							24
William McDonald (PIF)									16	19					35
N.J. Macpherson	50	50	60	42	44	56	53								355
Range Lake North (E)	20	20	19	29	25	28	25	15	17	23					221
Range Lake North (IF)								16							16
Range Lake North (PIF)									17	19					36
Ecole Sir John Franklin (E)											63	64	81	105	313
Ecole Sir John Franklin (FI)											27	36	16	24	103
Ecole Sir John Franklin (PIF)											57	35	30	8	130
Totals	150	150	164	140	172	161	154	137	135	154	147	135	127	137	2063

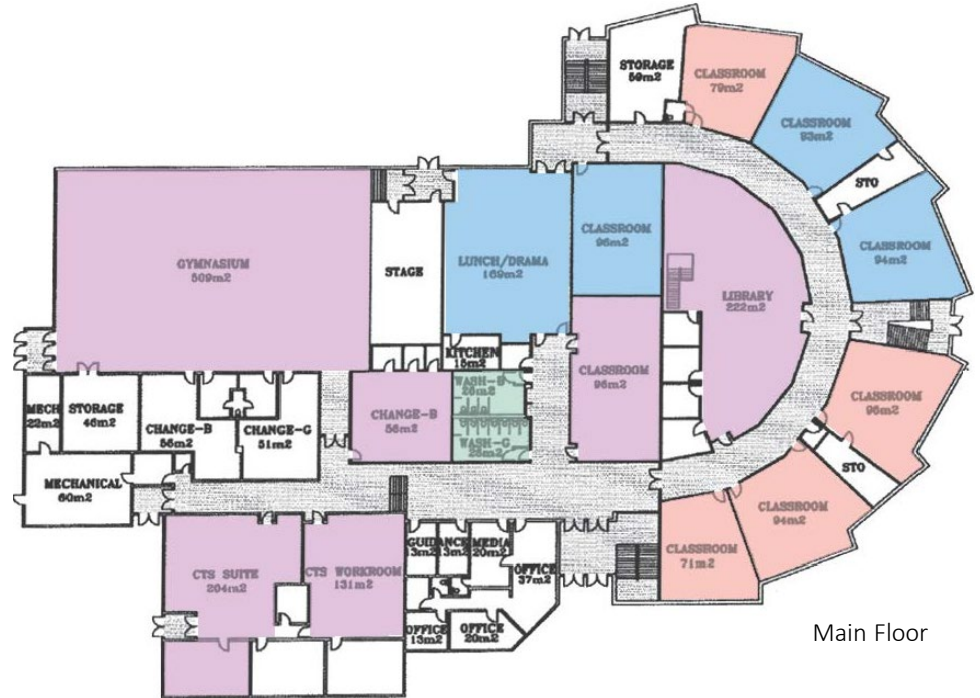
2021-2022

School	JK	K	1	2	3	4	5	6	7	8	9	10	11	12	Total
Mildred Hall	20	20	20	17	23	40	31	27	19	30					247
Ecole J.H. Sissons (French)	60	60	60	68	46	63	46								403
William McDonald (E)								26	25	15					66
William McDonald (FI)								49	38	40					127
William McDonald (IF)								27							27
William McDonald (PIF)									24	16					40
N.J. Macpherson	50	50	50	60	42	44	56								352
Range Lake North (E)	20	20	20	19	29	25	28	12	15	17					205
Range Lake North (IF)								13							13
Range Lake North (PIF)									16	17					33
Ecole Sir John Franklin (E)											78	63	64	81	286
Ecole Sir John Franklin (FI)											38	27	36	16	117
Ecole Sir John Franklin (PIF)											38	57	35	30	160
Totals	150	150	150	164	140	172	161	154	137	135	154	147	135	127	2076

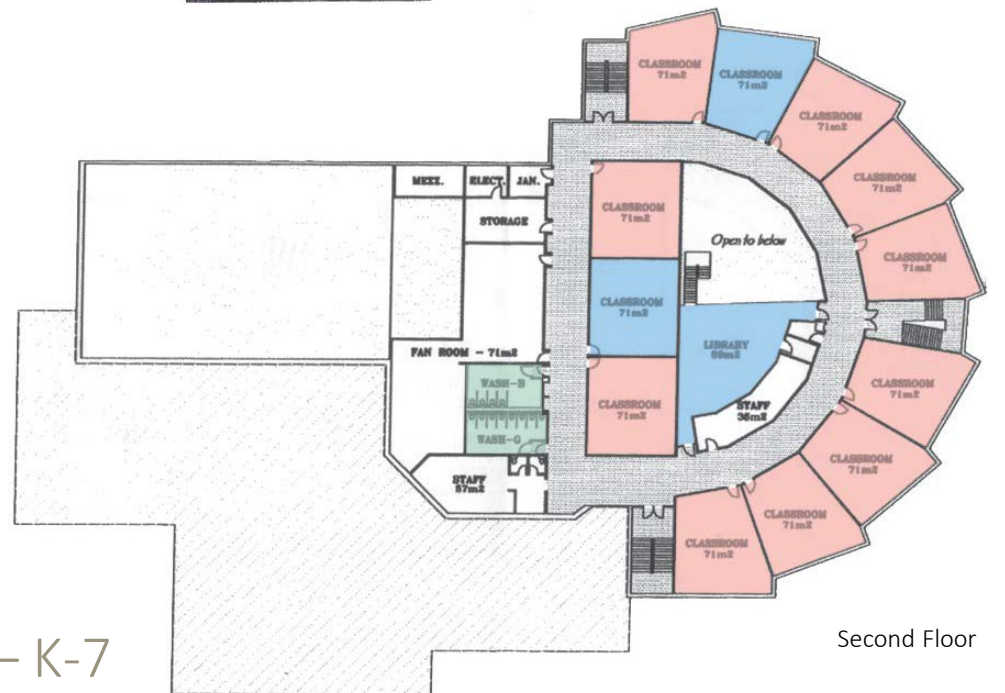


OVERVIEW – PLANNED MOVES

- Accommodation Classrooms - 8
- Occupied Classrooms - 14
- Programmed/Support Spaces
- Washrooms



Main Floor

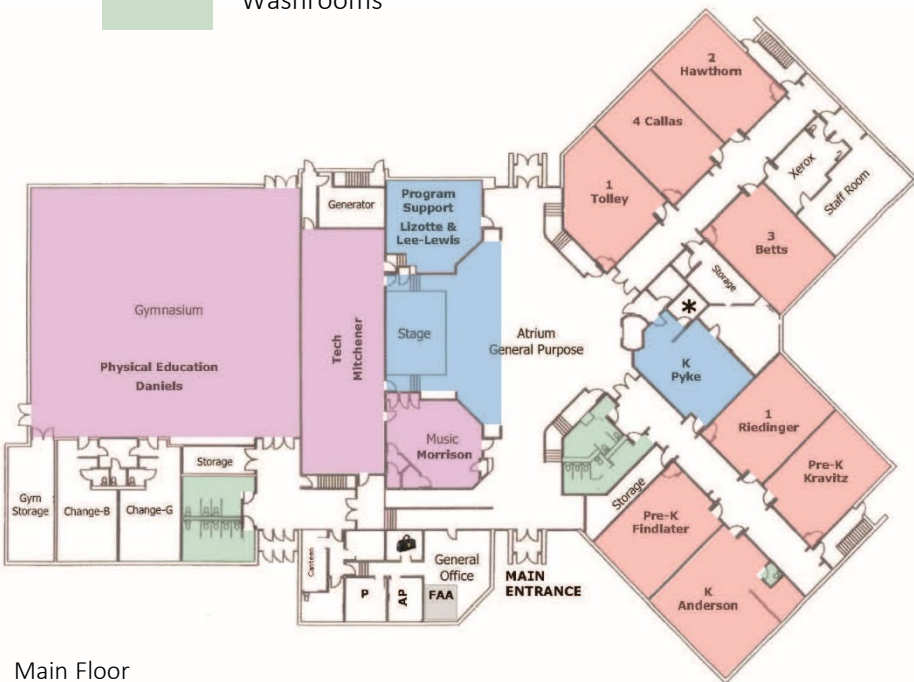


Second Floor



WILLIAM MACDONALD SCHOOL – K-7

- Accommodation Classrooms – 7*
- Occupied Classrooms - 12
- Programmed/Support Spaces
- Washrooms



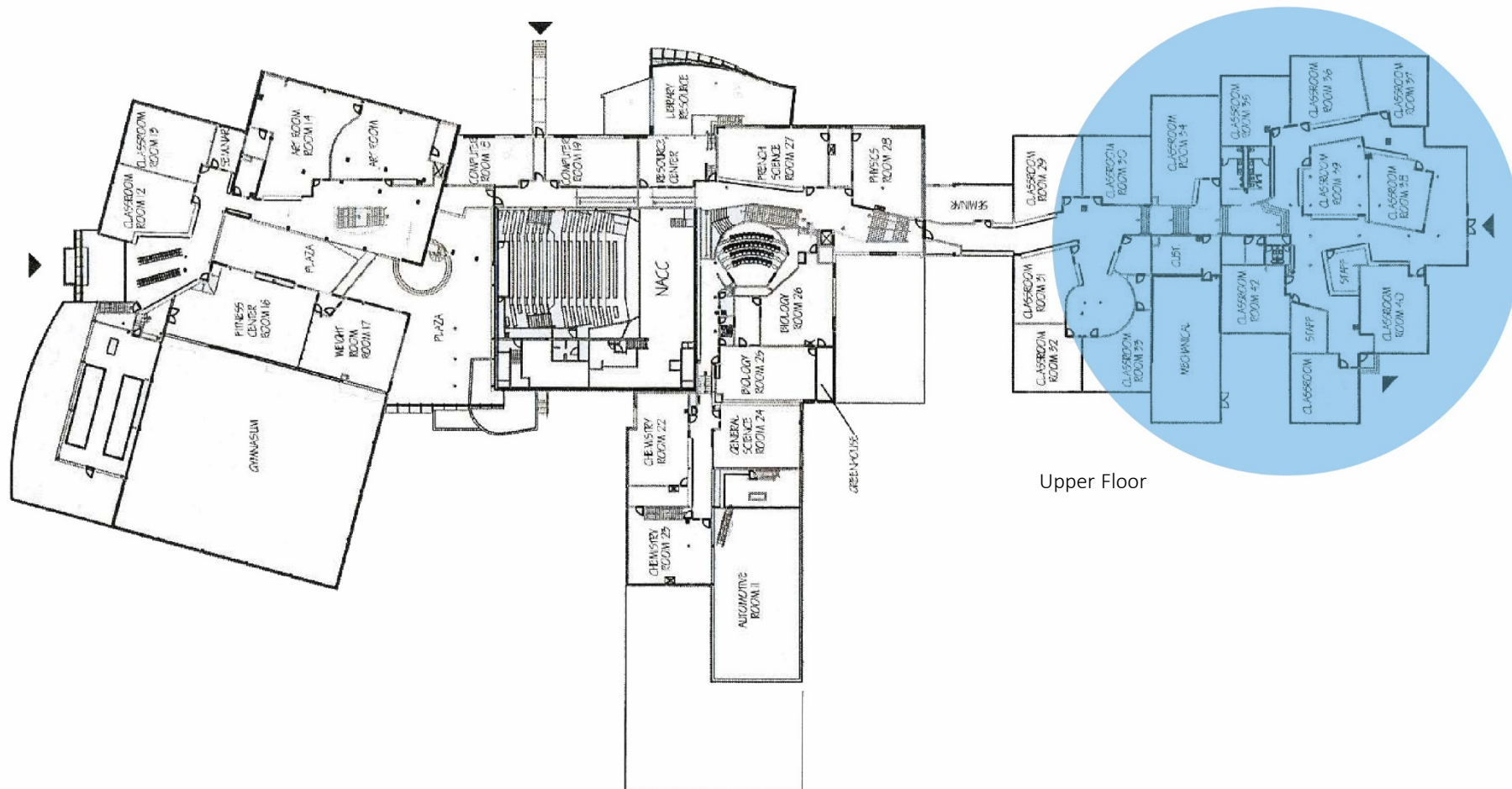
Main Floor



Second Floor

RANGE LAKE NORTH SCHOOL – JK-8

Accommodation Classrooms*





* GRADE 8'S WILL BE ACCOMMODATED IN UPPER PORTION OF SIR JOHN FRANKLIN SCHOOL WITH THE GRADE 9'S.

- Accommodation Classrooms – 2*
- Occupied Classrooms - 13
- Programmed/Support Spaces
- Washrooms





-  PLAYGROUND
-  AREAS OF CONCERN