

# INFORMATION BULLETIN # 3



50 Taylor Road Yellowknife, NT  
X1A3X2. (ph)873-5814,(F) 873-4671

## IMPORTANT INFORMATION FOR YOU!

Dear Parents and Guardians,

As promised here is a very important information bulletin regarding the DROP OFF / PARKING ROUTINE.

With the inclusion of JH Sissons students there will be in excess of 600 students between EWMMS, EASC and JHS being dropped off in the mornings and picked up at the end of the day. As you can imagine this will be an area of high congestion until we develop our routines and procedures that make it safe for everyone.

We have added a second drop off lane to accommodate this increased traffic and we have designated parking spots for parents/guardians, from all three schools, who will need to escort their child/ren to the school( JK/K -2 parents mostly). Please take a close look at the diagram attached to this document so that you are familiar with the process for dropping off. There will be only one way access, so it will be very important for you to make sure that you understand the expectations and follow the signage that has been created to make this safe for everyone.

You will see that the old drop off area will have designated 15 minute parking areas on the far left. The middle lane is for driving through( NOT to drop off) and the right lane is strictly a "Drop Off" or "Kiss and Ride".

The **NEW** drop off ( Secondary Drop Off) will strictly be a " Drop Off" or "Kiss and Ride" on the right and a drive through on the left. All traffic will go through both drop off areas and exit at the far end of the field closest to the fire hall. The middle exit will be strictly for BUSES as we can not allow for two way traffic in this location. Unless you need to use the disability parking area there is no need to come up into the upper parking area.

Please use the lower area to park and escort or enter into the building( when guests are permitted into the building by the CPHO). All parents who wish to walk their child up to the entrance of the school or to the portables must park in the designated areas to do so.

Thank you for your cooperation and understanding, we know that there will be some growing pains with this transition for everyone.

Thank you all, for your understanding.

EWMMS

## TIDBITS of INFO

- > Teachers are really excited to see everyone
- > Mr. Wicks loves the Toronto Maple Leafs
- > Our Lunch room is going to be the new ART ROOM. Lots of space
- > Hand- sanitizing stations in all classrooms and main entrances to the building and they are all here now!
- > Ms. Jelinski is teaching ELA this year!
- > Ms. Cheryl can't wait to get you all reading books from the library!
- > Mr. Green is going the 3D print a Tampa Bay Lightening LOGO for his desk
- > Mrs G still loves to wear her flip flops until it snows
- > There will be no micro-waves available in the school due to sanitary issues

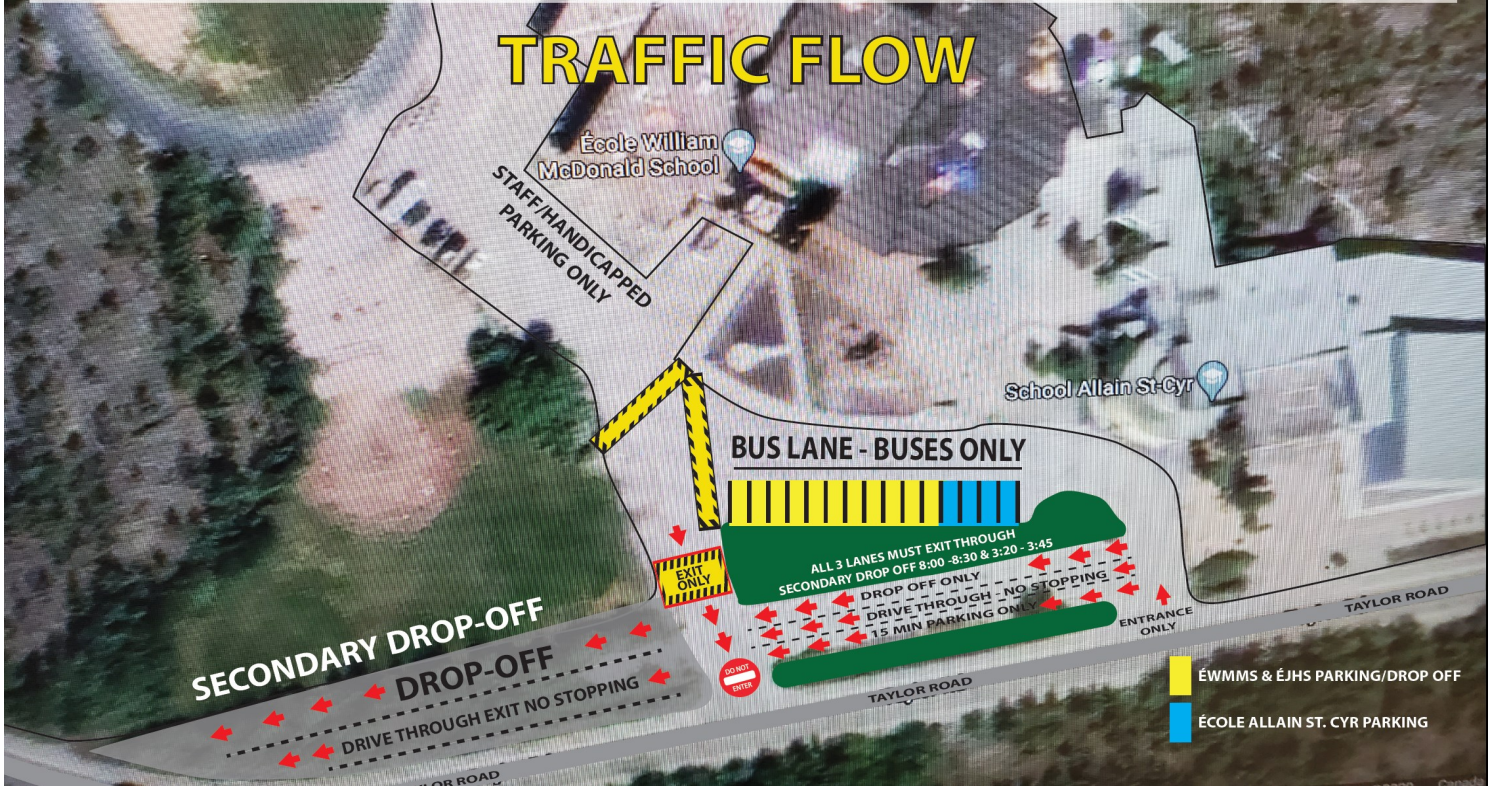


# TRAFFIC FLOW—DROP OFF AND PICK UP TIMES ARE 8:00-8:20 & 3:20-3:40



Commission scolaire francophone  
Territoires du Nord-Ouest

## TRAFFIC FLOW



## SCREENING PROTOCOL UPDATES



Government of  
Northwest Territories

### COVID-19 INFORMATION Daily Symptom Screening Tool

Use this COVID-19 screening tool with your child every morning before going to school.

- Has your child travelled outside of the NWT, or had close contact with anyone who has travelled outside of the NWT in the past 14 days?  
Has your child had close contact with anyone who is showing symptoms of COVID-19, is awaiting a COVID-19 test result, or has tested positive for COVID-19 in the past 14 days?  
**If the answer is YES to one or both questions above, please keep your child at home and contact public health for next steps.** If the answer to both questions is NO, move to Step 2.

- Does your child have **ONE** or more of the following symptoms?



Fever New or worsening cough Shortness of breath

**If your child has ONE or more of these symptoms, please keep them at home and contact public health for next steps.** If your child has none of these symptoms, move to Step 3.

You can find your local public health phone number here:  
<https://www.hss.gov.nt.ca/en/hospitals-and-health-centres>

My local public health/health centre phone number:

- Does your child have **TWO** or more of the following symptoms?



Sore throat Runny nose Nausea/vomiting Diarrhea



Headache Feeling generally run down and tired New loss or decrease in sense of taste or smell Body aches

**If your child has TWO or more of these symptoms, please keep them at home and contact public health for next steps.**

Updated: Aug. 26, 2020

### New Screening tool for Parents

Good News: Here is the updated **Screening Tool** for parents. If your child does have to go home you simply use the screening tool to determine if they can come back to school the next day. You **DO NOT** need to get any medical clearance to return to

