





Copenhagen International School, Denmark



Woodland Elementary School, Massachusetts



Itoi Elementary School, Japan

FLEXIBLE SPACES/FLEXIBLE FURNITURE



Sandal Magna Community Primary School, UK



Flexible Furniture, unknown



St. Joseph's Primary School, UK

FLEXIBLE SPACES/FLEXIBLE FURNITURE



East Three Schools, Inuvik

FLEXIBLE SPACES/FLEXIBLE FURNITURE



Chief Albert Wright School, Tulita

FLEXIBLE SPACES/FLEXIBLE FURNITURE



Woodland Elementary School, Massachusetts



James B Hunt Library, North Carolina



Lee Elementary School, Coppell, Texas

OPEN CONCEPT LIBRARY SPACES



Burr Street Elementary, Connecticut

OPEN CONCEPT



Burr Street Elementary, Connecticut

VISUAL CONNECTION TO THE OUTDOORS



Ecole Mer-et-Montagne, Campbell River, BC



St. Gabriel Catholic School, Brantford



UniverCity Childcare Centre, Burnaby

VISUAL CONNECTION TO THE OUTDOORS



Aspen Community School, Woody Creek, Colorado

VISUAL CONNECTION TO THE OUTDOORS



Early Childhood Centre, Netherlands

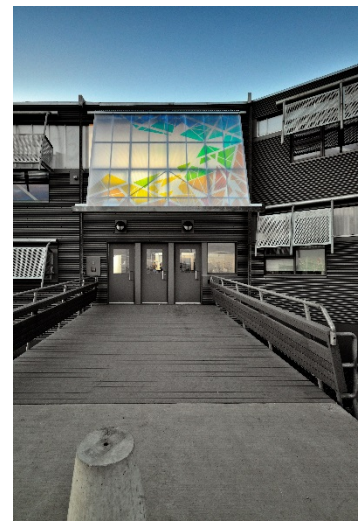
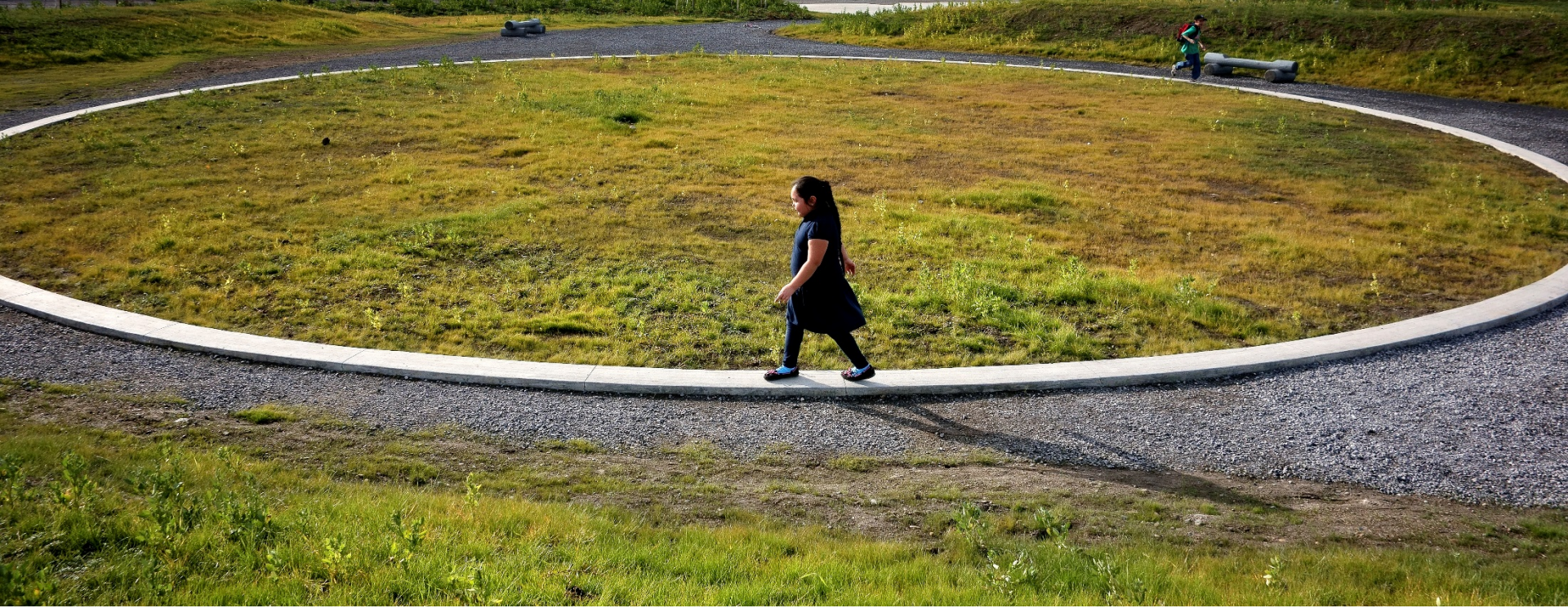
NATURAL LIGHT



Numata Elementary School, Japan



Itoi Elementary School, Japan



East Three Schools, Inuvik

CULTURAL IMAGERY & LOCAL CONTEXT



Kiilinik High School, Cambridge Bay

CULTURAL IMAGERY & LOCAL CONTEXT



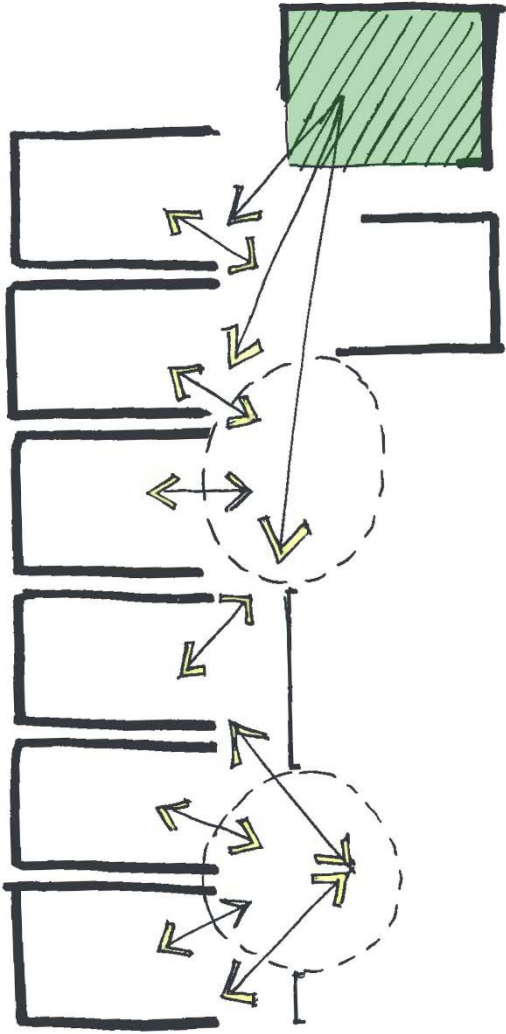
Lutsel K'e Dene School Floor Design



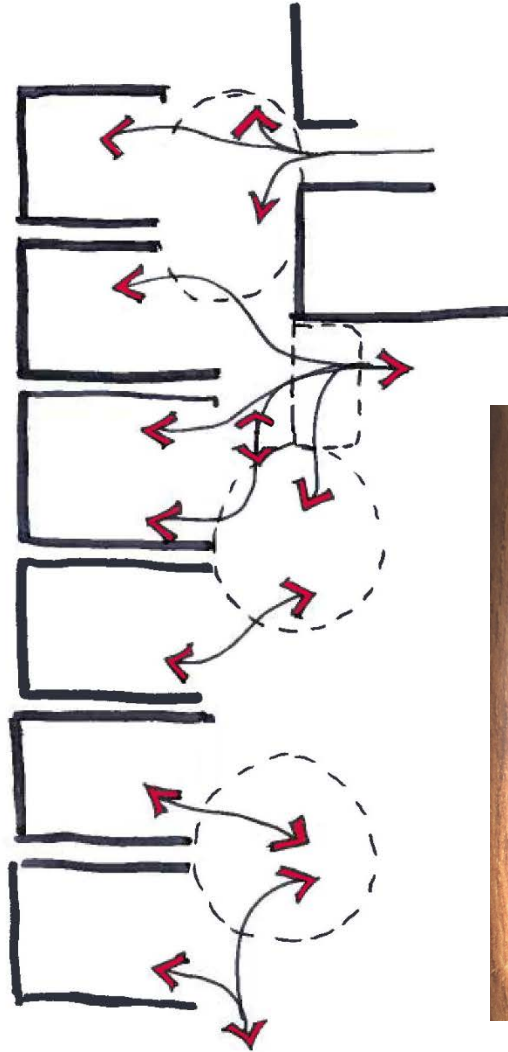
← KINDERGARTEN → PRIMARY →

Lutsel K'e Dene School Washroom Pod Wall Design

CULTURAL IMAGERY & LOCAL CONTEXT



Lutsel K'e Dene School Views Diagram



Lutsel K'e Dene School Movement Diagram



Lutsel K'e Dene School Rendering

PASSIVE SUPERVISION



Lee Elementary School, Coppell, Texas

NEW WAYS OF LEARNING



Aspen Community School, Woody Creek, Colorado

NEW WAYS OF LEARNING



Examples of technology in classrooms

TECHNOLOGY



Ecole Mer-et-Montagne, Campbell River, BC

BREAK OUT SPACES



BBC North, UK



Image from Neocon 2015



Hakuhodo Offices, Japan



Woodland Elementary School, Massachusetts

ACOUSTICS



Ramp and stairs, East Three Schools, Inuvik



Ramp and stairs, Germany



Exterior Ramp, East Three Schools, Inuvik

ACCESSIBILITY

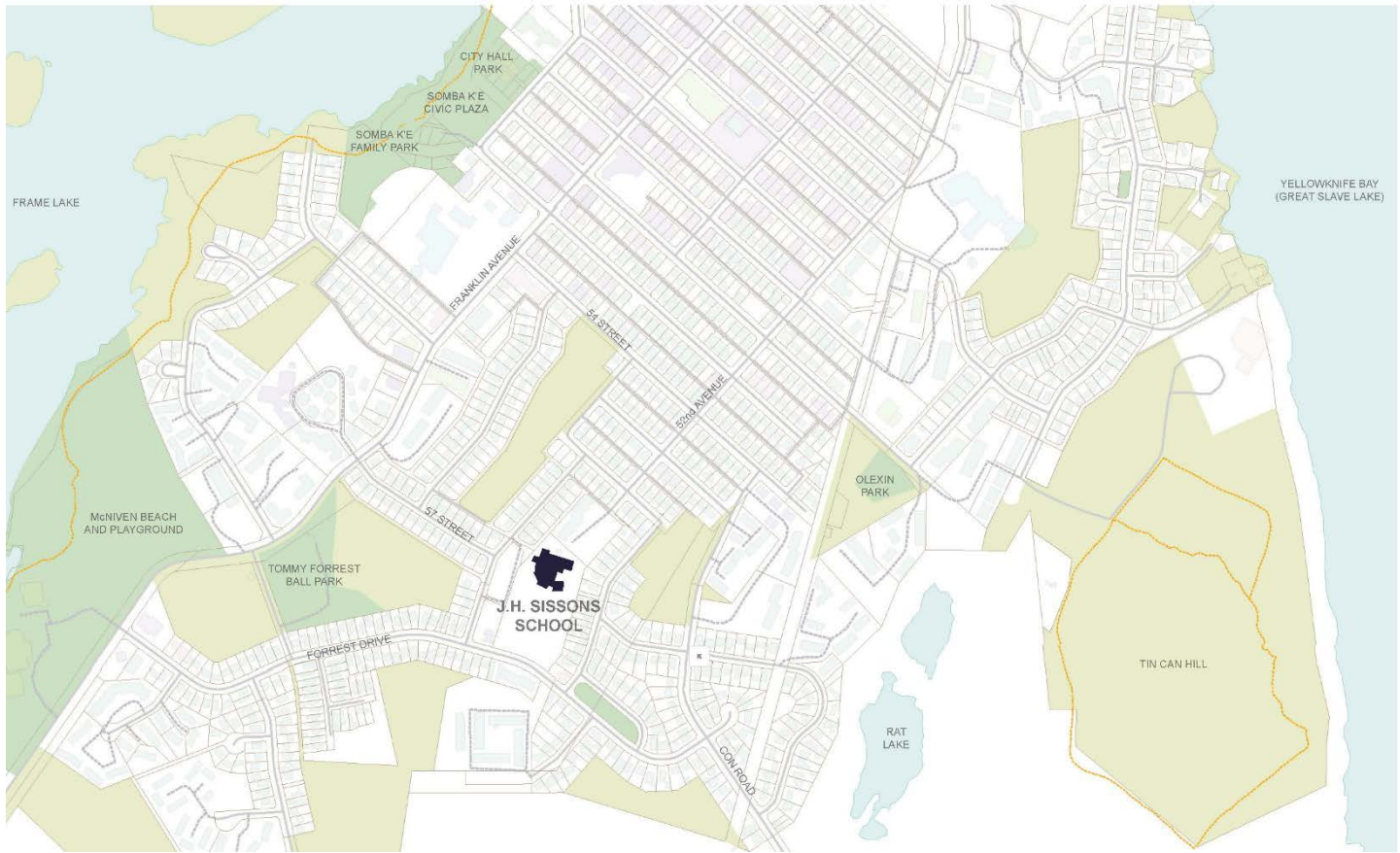


Here East Campus, London, UK

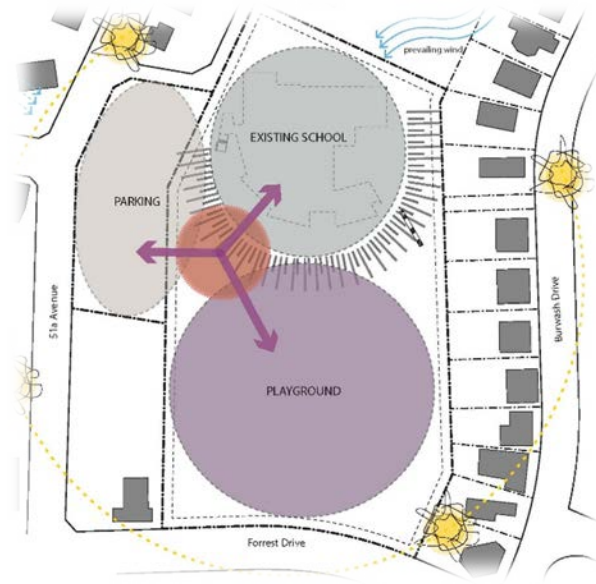
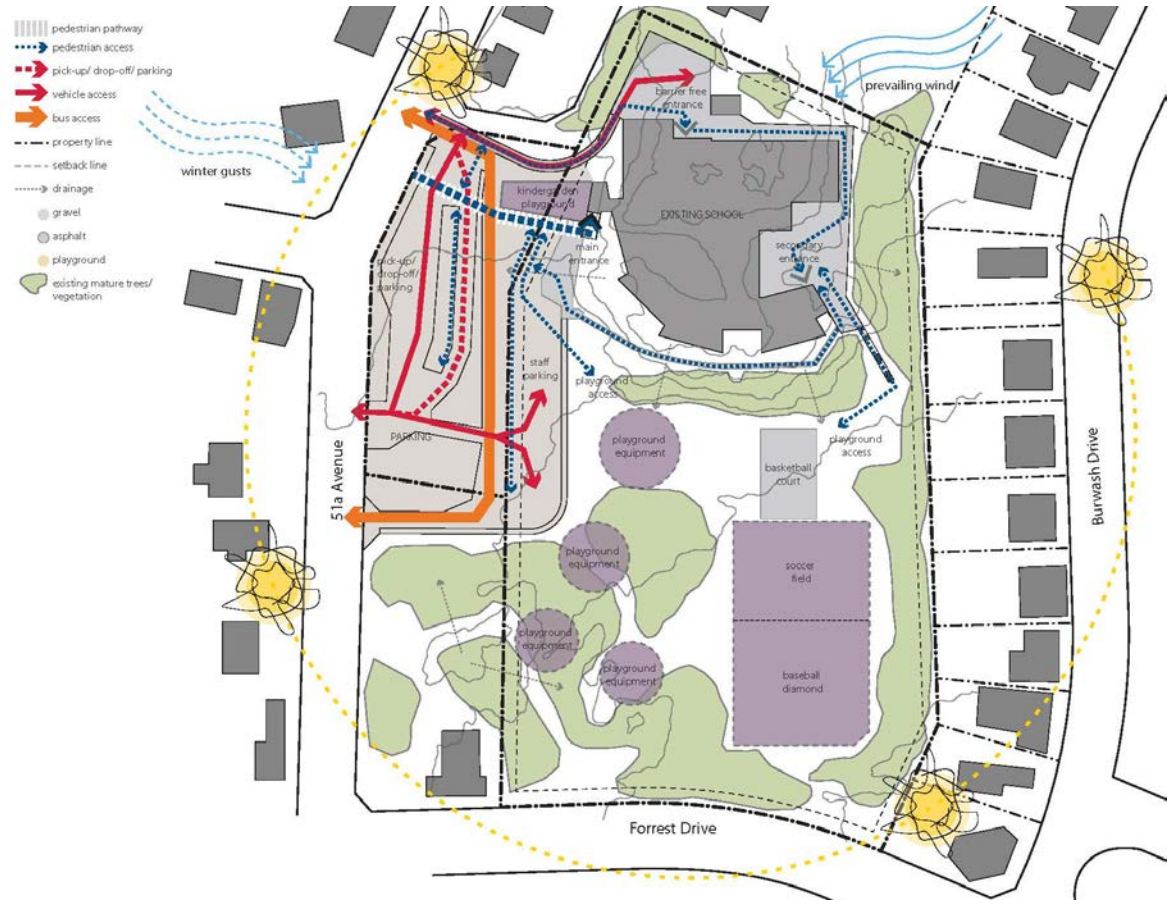
ACCESSIBILITY: wayfinding



École J.H. Sissons – Planning Study



LOCATION PLAN

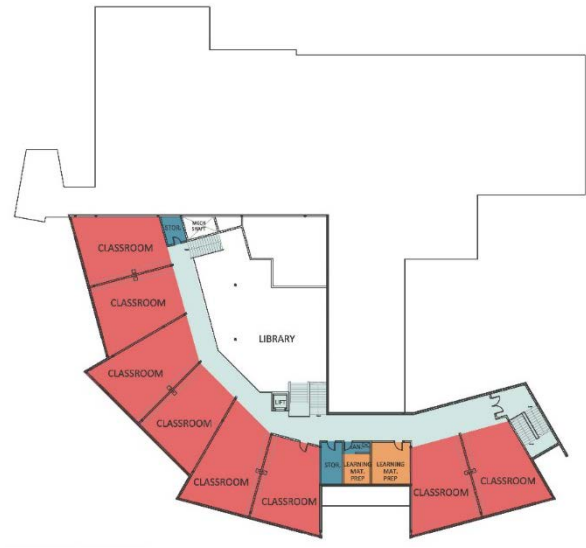


Relationship Diagram
School - Playground - Parking Lot

EXISTING SITE



Main Floor



Mezzanine



Functional Issues

- Barrier-free accessibility - both into and throughout the school
- Lack of connection between the school and the playground - both physically and visually
- Inability for administration to visually supervise the school interior (including the main entrance) or the exterior (parking and playground)
- The openness between the classrooms and the library has acoustic impacts, and is not in compliance with RCMP recommended school lock-down procedures
- Lack of break-out & learning support spaces
- Lack of storage throughout

EXISTING SCHOOL – FLOOR PLANS



Main Entrance



Vegetation and playgrounds



Playground (looking towards the school)

EXTERIOR PHOTOS



Library

Library



Classrooms open to corridor and library

Open concept classrooms

INTERIOR PHOTOS